



## PEGASUS GB

Portable Guard Booth

### Common Applications

- Security Checkpoints
- Property Protection
- Employee and Visitor Access Control
- Ticket Booths
- Property Surveillance

Now available through Sunbelt Rentals  
Sunbelt Priority Support

888-707-2486



The Rizon Pegasus GB Portable Guard Booth offers an enhanced and convenient guard booth option for your needs. Its compact footprint, and slots designed to be lifted with a forklift, making it great for superior portability and allows it to fit wherever you need it. Its sliding door, large glass windows for visibility, built in air conditioner, all steel construction, and availability for purchase at Avant-Garde or for rent from Sunbelt Rentals, make the Pegasus GB the superior guard booth perfect for your needs.

## TECHNICAL SPECIFICATIONS

RIZON BOOTHS ARE OF SINGLE UNIT WELDED STEEL CONSTRUCTION, FACTORY ASSEMBLED AND DELIVERED SET UP. FAILURE TO SECURELY ANCHOR BOOTH MAY RESULT IN OVERTURNING OF UNIT AND SERIOUS INJURY TO OCCUPANT.

**SAFETY GLAZING SPECIFICATIONS – CLEAR TEMPERED SAFETY GLAZING SET IN PAINTED GALVANIZED STEEL EXTERIOR** WINDOW FRAMES WITH INTERIOR ALUMINUM GLAZING STOPS.

INDUSTRIAL COATING. SHALL BE APPLIED TO ALL EXPOSED METAL SURFACES. THIS EXCLUDES ROOF SURFACE, ALUMINUM WINDOW FRAMES AND ANY STAINLESS STEEL COMPONENTS (IF USED).

**ELECTRICAL – ALL WIRING BY RIZON TO BE #12(MIN) STRANDED COPPER, THHN ENCLOSED IN EMT OR FLEXIBLE METAL CONDUIT** WHERE APPLICABLE PER NATIONAL ELECTRIC CODE. ALL ELECTRICAL EQUIPMENT WILL BE LISTED BY U.I. OR EQUIVALENT RECOGNIZED NATIONAL TESTING LABORATORY. ALL WIRING TO TERMINATE AT C.B.

PANEL. ALL CIRCUITS HAVE GREEN GROUND WIRE.

**BOOTH WILL HAVE A 3" CANOPY OVERHANG AND A 6" FASCIA ON ALL SIDES.**

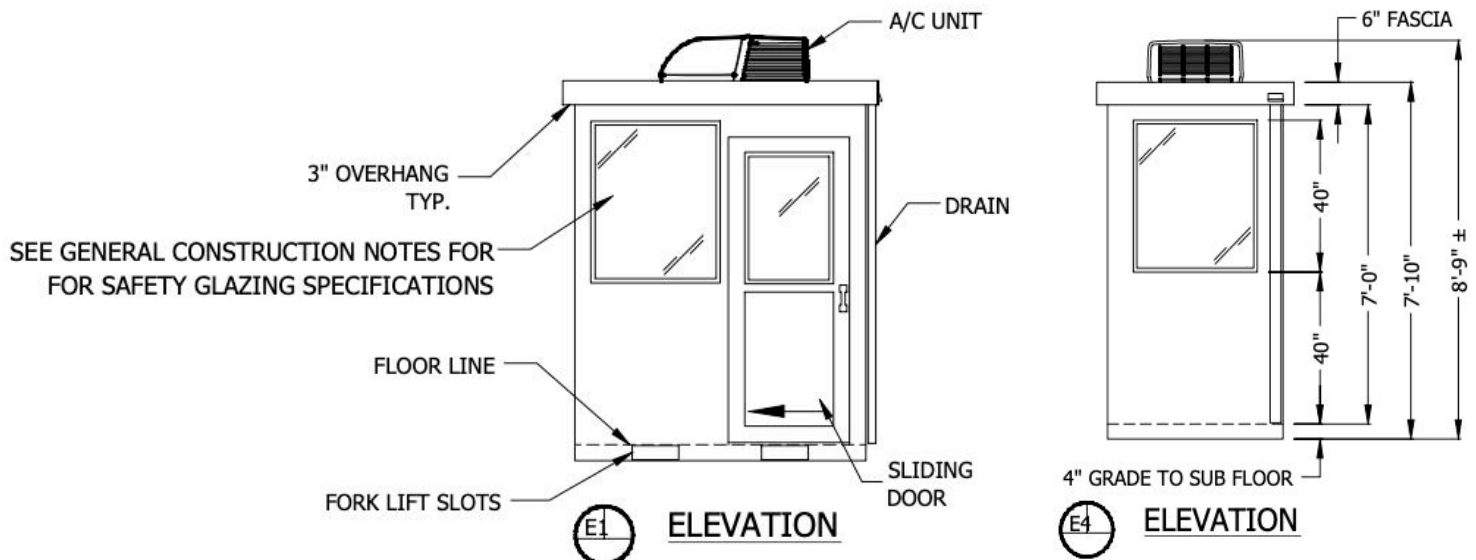
REMOVABLE LIFTING RING(S) ARE PROVIDED ON ROOF.

LIFTING RING(S) ARE DESIGNED FOR A STRAIGHT VERTICAL LIFT ONLY. SPREADER BARS MUST BE USED WHERE APPLICABLE TO ENSURE STRAIGHT VERTICAL LIFT. ALL WARRANTIES WILL BE VOID IF NOT LIFTED IN THIS MANNER.

**NO ON SITE WORK BY RIZON.**

ACTUAL LOCATION OF ELECTRICAL DEVICES MAY VARY DUE TO INSTALLATION CONSTRAINTS, SHIPPING RESTRICTIONS, OR FOR PROPER PLACEMENT TO SATISFY APPLICABLE CODES.

## PEGASUS GB DIMENSIONS



**LINE ITEMS**

ITEM #	DESCRIPTION	QTY
1	COUNTER - 16" DEEP PAINTED GALVANIZED STEEL MOUNTED 32" A.F.F.	1
	PAINTED STORAGE DRAWER.	1
2	DOOR - 30" SLIDING STEEL WITH WEATHER-STRIPPING, BALL BEARING HANGERS, HEAVY DUTY	
3	TRACK, SAFETY GLAZING, HOOK BOLT LOCK, AND HARDWARE.	2
4	2" DIAMETER HOLE IN COUNTER FOR DROP CORDS.	1
5	DUPLEX OUTLET MOUNTED ABOVE COUNTER.	1
6	INTERIOR LIGHT WITH WALL SWITCH - 24" LED LIGHT FIXTURE WITH ACRYLIC LENS.	1
7	WALL SWITCH FOR INTERIOR LIGHT.	1
8	HEATER - 120V/1,500 WATT WALL MOUNTED WITH INTEGRAL THERMOSTAT CONTROL.	1
9	CIRCUIT BREAKER PANEL - 12 SPACE, 1-3 WIRE WITH GROUND BAR, 100 AMP MAIN BREAKER AND BRANCH	
	BREAKERS FOR FACTORY INSTALLED DEVICES PROVIDED.	1
10	AIR CONDITIONER - 120V/13,500 BTU ROOF MOUNTED WITH INTEGRAL THERMOSTAT	
	CONTROL AND WHITE SHROUD.	1

