

SLIM Lite 970 Optical Turnstile

The SlimLite 970 double swing door security entrance lane offers a high bidirectional throughput while maintaining the safety and security of the users.

With its small footprint, the SlimLite 970 is designed to integrate within most architectural styles.

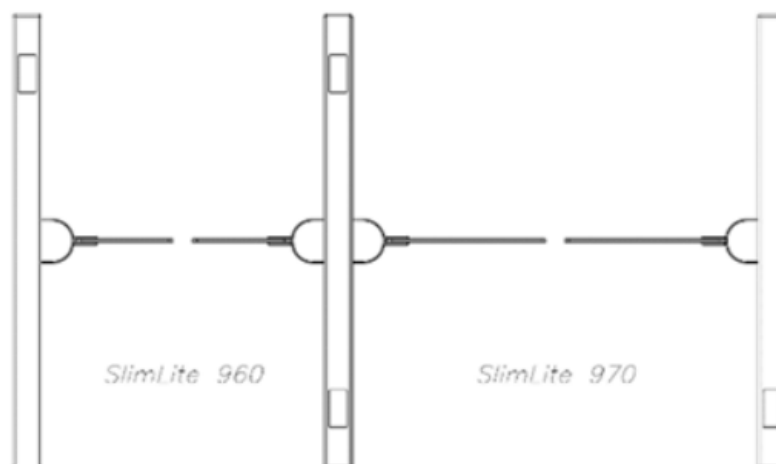
Equipped with high processing capacity and an exclusive detection system, the SlimLite 970 guarantees accurate user tracking and prevents unauthorized use.

Description

1. Self-supporting steel frame with black anti-corrosion powder coated paint. The frame contains the electromechanical drive assembly for the swinging obstacle and the electronic control boards.
2. Black powder coated steel panels are fastened to the frame for access to the internal components.
3. Clear, 3/8 in (10 mm) thick mobile glass obstacles, swinging in the direction of the users' passage.
4. Electromechanical drive unit consisting of:
 - A DC permanent magnet motor with an epicyclic gearbox.
 - A controller which provides progressive accelerations and decelerations of the obstacles, for smooth movement and enhanced user safety.
 - A geared electromagnetic brake for locking of the obstacles in the event of forced entry attempts.
 - A sensor to monitor the obstacles position.
 - EGRESS standard operating mode: obstacles open in the direction of egress with a simple push.
 - Battery backup for automatic opening in case of power failure in egress direction.
5. AS1190 logic control board, equipped with ARM 9 technology and a Linux operating system, ensuring advanced throughput management. An embedded web server, accessible through a web browser, offers an interface for the configuration of functional gate parameters, as well as a complete diagnostic and maintenance tool.

Description cont.

- 6. Transfer of information through an Ethernet interface, USB and dry contacts: passage authorization, passage information, reader locking, fraud, equipment failure ...
- 7. Function pictograms indicating gate and passage status to the user.
- 8. Proprietary DIRAS detection system, consisting of a high-density matrix of infrared transmitter/receiver photocell beams. It follows users' progression through the turnstile, as well as ensuring their safety during opening/closing of the mobile obstacles.



Key Features

Power requirement	15A @ 24 VDC 6A @ 120VAC (optional)
Consumption per lane	40 W (at rest) 300 W (nominal)
Motor	24 VDC – 93 W
Passageway (W)	36 in (914 mm)
Min opening and closing times	0.9 to 1.2 s (Depending on the access control system reactivity and the speed of users)
Ambient operating T°	32 to 122°F (0 to +50°C)
Ambient relative humidity in operation	< 95%, no condensation
Sound level	55 dB
Weight	141 lbs (64 kg) (per left/right unit) 209 lbs (95 kg) (per intermediate unit)
IP	40
Certification	As per UL 2593, File E210350



Options

1. 120VAC Power supply
2. SECURI-SAFE operating mode: electromechanical locking of the obstacles in case of forced entry attempt in any passage direction
3. Glass height options: 47" [1194mm], 59" [1499mm] and 67" [1702mm]
4. Standard side reader integration within housing
5. Top barcode reader integration.*
6. Customized logo on obstacle
7. Monitoring panel (Smart & Slim / Smart Touch / manual CP)
8. Connectivity kit for Ethernet connection of one or more lanes to the network
9. Customized color
10. Raised base
11. Ramp

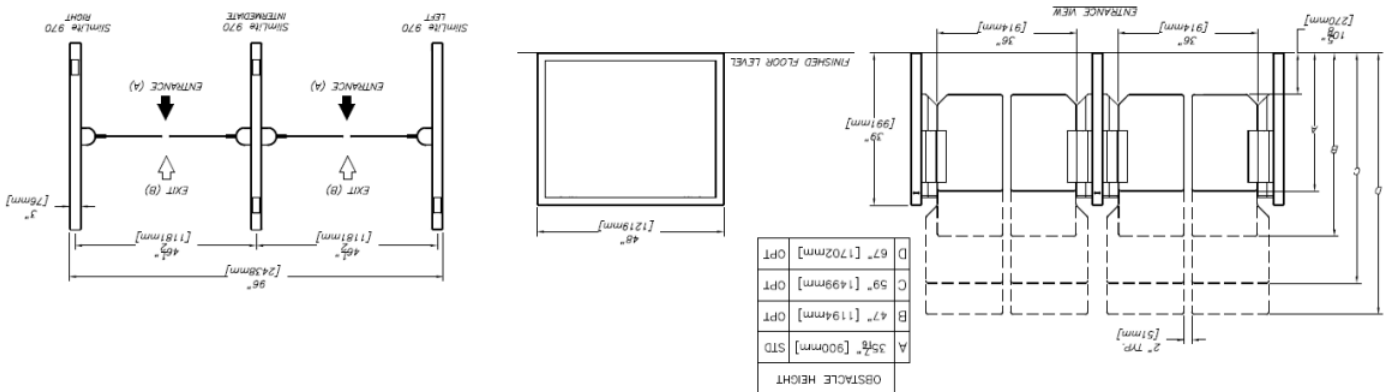
* See respective datasheet for more information

Precautions for Use

- For security reasons, children (users smaller than 39" tall) must be supervised by an adult at all times when in the vicinity of the unit and during passage through the lane.
- A child must absolutely precede the accompanying adult.

Work to be Provided by Others (Not Supplied)

- Performing the electrical interconnection and connections to the power grid.
- Performing the connections to the access control systems.
- Anchoring the equipment with the appropriate hardware for your floor type.



*With a constant view to adopting the latest technological developments, Automatic Systems reserves the right to amend the above information at any time.

EGRESS mode compliant with the highest safety standards

- In case of emergency, the barriers can be opened with a simple push in the exiting direction
- Audio and visual signal evacuation in progress
- Returns to prior operating mode (programmable timer)
- Barriers remain locked from entry side
- When fire alarm is triggered, the barriers will automatically open in the exiting direction and will remain so as long as the alarm is active

