



ALVARADO

MT

Crowd Control Turnstile

Alvarado MT Crowd Control Turnstile is a single direction four-arm turnstile that provides entry access and pedestrian directional control in all types of public environments

The MT turnstile is often used in a store front entry design layout. Commonly installed in conjunction with Alvarado's pedestrian gates and modular post and railing, the product controls the flow of patrons into supermarkets, drug stores, discount stores and other retail establishments. Other locations where MT turnstiles are used include cafeterias, amusement parks and health clubs or anywhere crowd control, pedestrian access control or pedestrian flow control is required.

Common Applications

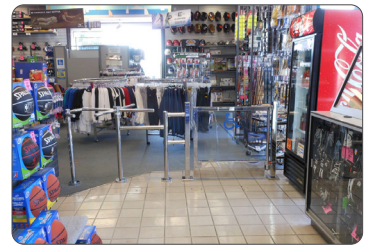
- Controlling Pedestrian Traffic Flow
- Employee & Visitor Access Control
- People Counting

Why Alvarado?

Alvarado is the leading manufacturer of waist high turnstiles. Since its founding in 1956, Alvarado equipment has been installed in thousands of locations throughout the world. Our superior product quality, integration expertise and industry leading service and support are just a few reasons that many of the world's most respected companies use our products again and again.

Key Features

Controls:	One-way operation controls unwanted entry or exit
Traffic Control:	Controls and directs patron traffic
Ease of Use:	Very easy for patrons to push and move through
Integrations:	Integrates with Alvarado gates, posts, and railing
Versatility:	In combination with Alvarado gates, can be used in layouts that meet most public accessibility requirements



Available Models

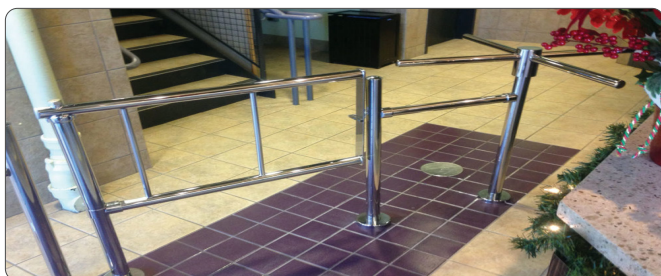
MT01-001 - (Four Arm)

Certifications

The MT Crowd Control turnstiles are independently tested and certified by LA Testing Labs. They are also CE marked.

Options

Railing outlets can be added to the yoke and end post to allow the attachment of Alvarado 1.75" OD horizontal railing.



Dimensions

