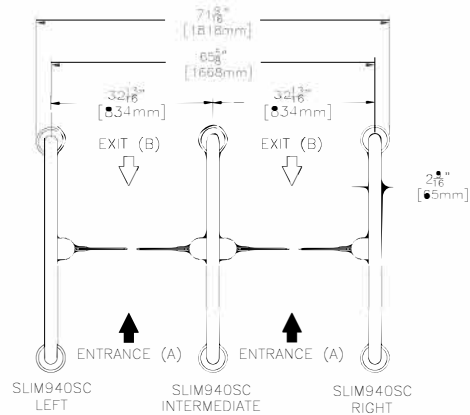
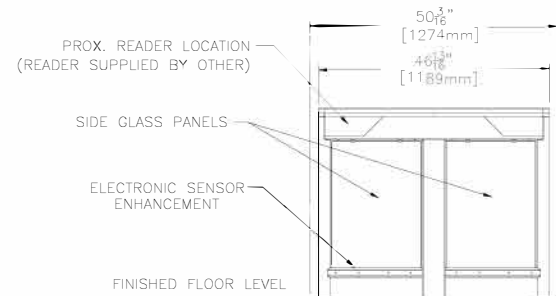
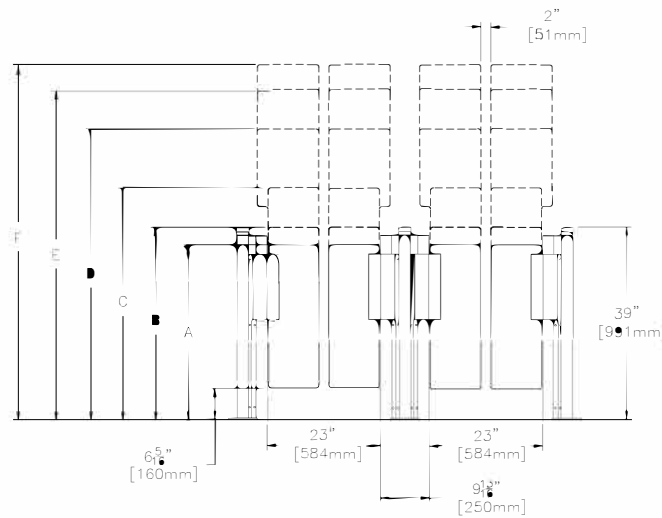


NO. DE DESSIN
DWG NO. **NAM-SLIM940SC-IN-00-EN**



OBSTACLE HEIGHT	
A	35 7/8" [900mm] STD
B	39" [991mm] OPT
C	47" [1194mm] OPT
D	59" [1499mm] OPT
E	67" [1702mm] OPT
F	72" [1829mm] OPT



- NOTES:
- 1-FOR ELECTRICAL CONNECTIONS, CONDUITS AND TEMPLATE LAYOUT REFER TO NAM-SLIM-EL-50-EN.
 - 2-FOR READER DIMENSIONS REFER TO NAM-SLIM-DS-01-EN.

AUTOMATIC SYSTEMS MAKES NO REPRESENTATION AS TO THE PROPER POSITIONING OF THE SECURITY ENTRANCE LANE AT THE INSTALLATION LOCATION. ESTABLISHING THE LAYOUT AND PLACEMENT OF THE UNIT(S) AND DETERMINING COMPLIANCE WITH THE APPLICABLE BUILDING CODES, OTHER CODES, LAWS AND REGULATIONS IS THE SOLE RESPONSIBILITY OF THE PURCHASER. INSTALLATION MUST BE PERFORMED BY A QUALIFIED INSTALLER FOLLOWING MANUFACTURER'S INSTRUCTIONS, OTHERWISE AUTOMATIC SYSTEMS' WARRANTIES MAY BE VOID.

REV	DATE	MODIFICATIONS/CHANGES	PAR/BY

MATERIAL/MATERIAL	LES DIMENSIONS SONT EN POUCES / DIMENSIONS ARE IN INCHES	EDGERBER & ENLEVER LES ARÊTES VIVES. DIM SELON ASME Y14.5 1994. NE PAS MESURER SUR LE DESSIN	
TRATÉMENT/TREATMENT	TOLERANCES XXX ± .005 XX ± .010 X ± .015 FNC ± .1/32 ANGLES ±1/2°	BREAK ALL SHARP EDGES AND CORNERS. ALL DIM PER ASME Y14.5 1994. DO NOT SCALE DRAWING	
FINI/FINISH	NB/APP POIDS/WEIGHT SURFACE	SAUF SI INDICUÉS UNLESS OTHERWISE NOTED	FORMER / FILENAME NAM-SLIM940SC-IN-00-EN.DWG
LES INFORMATIONS CONTENUES SUR LES DESSINS DE ASA INC SONT CONFIDENTIELLES ET SONT LA PROPRIÉTÉ DE ASA INC. TOUTES REPRODUCTIONS, DISTRIBUTIONS OU UTILISATIONS SONT INTERDITES SANS LA PERMISSION DE ASA INC.		TITRE SLIMLANE 940 SC - 2 LANE INSTALLATION	
INFORMATION DISCLOSED HERE IS CONFIDENTIAL AND IS THE PROPERTY OF ASA INC., ANY REPRODUCTION, DISTRIBUTION OR USE IS PROHIBITED WITHOUT A WRITTEN CONSENT BY ASA INC.		ESCALE/SCALE: N/A FORMAT/SIZE: B DATE: 2018/09/04	FEUILLE/SHEET: 1 DE/OF: 1 NO. DE DESSIN/DWG. NO.: NAM-SLIM940SC-IN-00-EN REV: A
DESSINÉ PAR DRAWN BY: OHL		VÉRIFIÉ PAR CHECKED BY: SOS	