



## ALVARADO GST Crowd Control Turnstile

Alvarado GST is a four-arm turnstile that provides entry access and pedestrian directional control in public environments. The curved arm design provides an impediment to pedestrians attempting to duck under the turnstile arms in the wrong direction. The turnstile rotates in one direction in either the clockwise or counter-clockwise direction. The four arm configuration moves smoothly and silently in a single direction; and requires very minimal hand pressure to move. Its uniquely curved arms offer an added measure of security against wrong-way or crawl-under pedestrian traffic.

### Common Applications

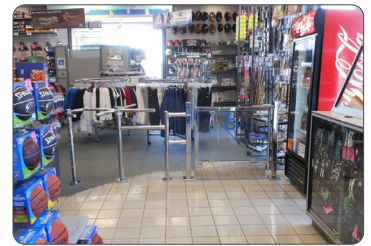
- Store Front Entry
- Crowd Control
- People Counting

### Why Alvarado?

Alvarado is the leading manufacturer of waist high turnstiles. Since its founding in 1956, Alvarado equipment has been installed in thousands of locations throughout the world. Our superior product quality, integration expertise and industry leading service and support are just a few reasons that many of the world's most respected companies use our products again and again.

## Key Features

|                  |   |
|------------------|---|
| Controls:        | One-way operation controls unwanted entry or exit   |
| Traffic Control: | Controls and directs patron traffic   |
| Ease of Use:     | Very easy for patrons to push and move through  |
| Integrations:    | Integrates with Alvarado gates, posts, and railing  |
| Versatility:     | In combination with Alvarado gates, can be used in layouts that meet most public accessibility requirements |
|                  |   |



## Available Models

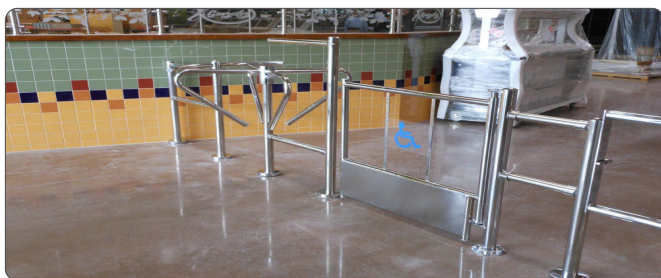
GST01-001 - (Four Arm)

## Certifications

The GST Crowd Control turnstiles are independently tested and certified by LA Testing Labs. They are also CE marked.

## Options

The GST turnstile can be ordered with factory attached rail outlets for integration with Alvarado's modular posts and railing. Loose outlets can also be ordered for field installation.



## Dimensions

